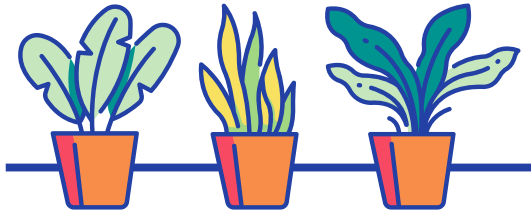




the3engineers

Photosynthesis



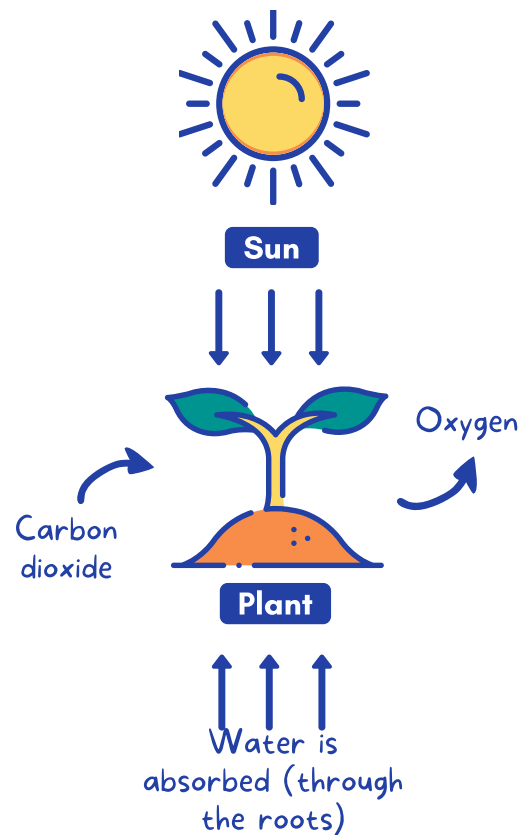
Photosynthesis is the process where plants transform light energy into chemical energy. Plants use this energy to make their own food. The light energy they captured is used to convert carbon dioxide, water, and minerals into oxygen.

Chlorophyll

The pigment that gives plants their green color and helps in the process of photosynthesis.

Did you know?

There are organisms other than plants that can undergo photosynthesis. These include algae and the emerald green sea slug.



The Photosynthesis Formula



CARBON DIOXIDE

WATER

SUGAR

OXYGEN